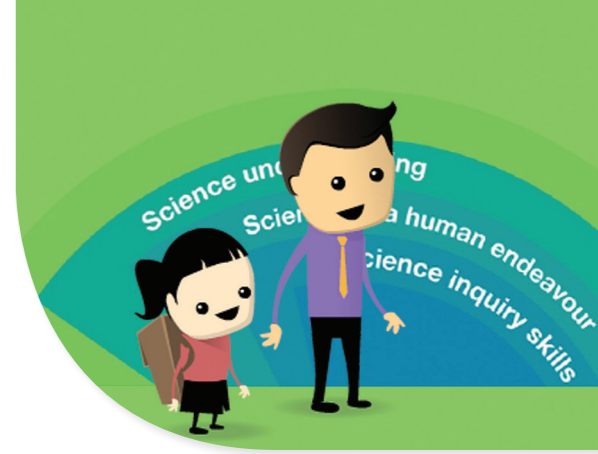


5 – 6 Science Placemat

We can ask these questions to help us think, work and process like a scientist.



What do you notice?

What are the observable similarities?

What do you notice changes over time and/or geographically?

What do you see?
What do you hear?
What do you smell?
What do you taste?
What do you feel?

What features are the same or different?

What equipment might help us make observations?

What do you think?

What is the same?

What is different?

How could you group them?

What patterns do you notice?

Is there anything unusual?

What is happening?

What questions do you have?

What do you think if?

Is there another way to group them?

What would happen if you added something or removed something?

If we change something how might that affect it?

How can you explore?

What are you going to investigate?

How are you going to investigate?

What ideas do you have?

What could you try?

How could you test your idea?

How can you keep yourself safe when investigating?

Is your test fair?

How can you review and communicate?

How might you represent your data and your ideas?

Can you use a list, table, graph or drawing to share your ideas?

How could you improve your investigation?

How did your thinking change?

So what?

Who might be interested in this?

Why might people be interested in this?

What else could you investigate?