

Transforming Tasks for Intellectual Challenge

3

participated in ___ hours of professional learning

***This workshop addresses the following
Australian Professional Standards for Teachers:***

<i>Professional Knowledge</i>	<i>Std 1</i>	<i>Know students and how they learn</i>
	<i>Std 2</i>	<i>Know the content and how to teach it</i>
<i>Professional Practice</i>	<i>Std 3</i>	<i>Plan for and implement effective teaching and learning</i>
	<i>Std 4</i>	<i>Create and maintain supportive and safe learning environments</i>
<i>Professional Engagement</i>	<i>Std 6</i>	<i>Engage in professional learning</i>



Government of South Australia
Department for Education and
Child Development

SA TfEL

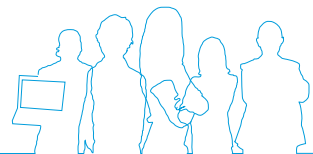
South Australian Teaching for Effective Learning

Learning Improvement Division

Principal
date

Professional Learning Matrix

Standard 1 Know students and how they learn	Standard 2 Know the content and how to teach it	Standard 3 Plan for and implement effective teaching and learning	Standard 4 Create and maintain supportive and safe learning environments	Standard 5 Assess, provide feedback and report on student learning	Standard 6 Engage in professional learning	Standard 7 Engage professionally with colleagues, parents/carers and the community
1.1 Physical, social and intellectual development and characteristics of students	2.1 Content and teaching strategies of the teaching area	3.1 Establish challenging learning goals	4.1 Support student participation	5.1 Assess student learning	6.1 Identify and plan professional learning needs	7.1 Meet professional ethics and responsibilities
1.2 Understand how students learn	2.2 Content selection and organisation	3.2 Plan, structure and sequence learning programs	4.2 Manage classroom activities	5.2 Provide feedback to students on their learning	6.2 Engage in professional learning and improve practice	7.2 Comply with legislative, administrative and organisational requirements
1.3 Students with diverse linguistic, cultural, religious and socio-economic backgrounds	2.3 Curriculum, assessment and reporting	3.3 Use teaching strategies	4.3 Manage challenging behaviour	5.3 Make consistent and comparable judgements	6.3 Engage with colleagues and improve practice	7.3 Engage with the parents/carers
1.4 Strategies for teaching Aboriginal and Torres Strait Islander students	2.4 Understand and respect Aboriginal and Torres Strait Islander people to promote reconciliation between Indigenous and non-Indigenous Australians	3.4 Select and use resources	4.4 Maintain student safety	5.4 Interpret student data	6.4 Apply professional learning and improve student learning	7.4 Engage with professional teaching networks and broader communities
1.5 Differentiate teaching to meet the specific learning needs of students across the full range of abilities	2.5 Literacy and numeracy strategies	3.5 Use effective classroom communication	4.5 Use ICT safely, responsibly and ethically	5.5 Report on student achievement	Useful links <ul style="list-style-type: none"> • DECD Performance and Development webpage • DECD Australian Professional Standards for Teachers webpage • DECD Mapping Your Evidence tool • AITSL Australian Professional Standards for Teachers webpage 	
1.6 Strategies to support full participation of students with disability	2.6 Information and Communication Technology (ICT)	3.6 Evaluate and improve teaching programs				
		3.7 Engage parents/carers in the educative process				



Scan the code to access this document electronically.



Government of South Australia
Department for Education and Child Development